

# TRITON S SERIES

## RESIN BOND DIAMOND TOOLING

Resin 3" Velcro Puck Diamond Tools for Extremely High Shine

**NEW!**

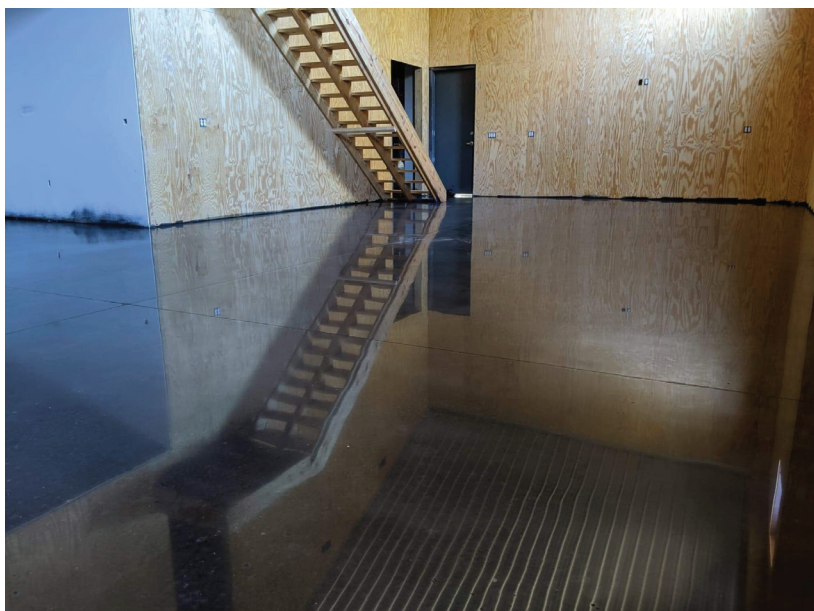


**Dramatically increase shine and clarity on floors where DOI and Gloss levels are a huge factor!**

The SASE Triton S-Series has been formulated to produce the highest shine with increased gloss levels up to 50% higher than other resin diamond tooling. It also includes a 400 grit option allowing for transitioning sooner. It is great for those applications where DOI and gloss measurements are a major specification factor.

### **FEATURES**

- Specifically formulated for to produce the highest shine when compared to other resins bond lines
- Increased gloss levels up to 50% higher
- Includes 400 grit option allowing for transitioning sooner
- Great for applications where DOI and Gloss measurements are a major specification factor
- Available in various grits - 400, 800, 1500 & 3000 grits







HOL.905218  
SASE 3" Puck Flex Plate

# TRITON S SERIES

## RESIN BOND DIAMOND TOOLING



### SASE S Series Tooling Guide

Item #	Product Name	Description
 <b>HOL.300724</b>	3" Triton S-Series Diamond Puck Red - 400 grit	Removes 200 grit resin scratches or next step after transitioning from hybrid resins. Used if higher gloss is required in final steps.
 <b>HOL.300725</b>	3" Triton S-Series Diamond Puck White - 800 grit	Removes 400 grit resin scratches and leaves a very high shine. Can be the final step in polishing application. Used if higher gloss is required in final steps.
 <b>HOL.300726</b>	3" Triton S-Series Diamond Puck Yellow - 1500 grit	Removes 800 grit resin scratches and leaves a very high shine. Can be the final step in polishing application. Used if higher gloss is required in final steps.
 <b>HOL.300727</b>	3" Triton S-Series Diamond Puck Green - 3000 grit	Removes 1500 grit resin scratches and leaves the highest shine and the final step in polishing application. Used if higher gloss is required in final steps.



**SASE Company, LLC.**  
 2475 Stock Creek BLVD | Rockford, TN 37853  
 Phone: 1 (800) 522-2606 | Fax: (865) 745-4110  
 Web: [www.SASECompany.com](http://www.SASECompany.com)

© 2020 SASE Company, LLC. All Rights Reserved - v2020-01-23 | 1120